



Quadrate

THE BEST RUN SAP SYSTEMS RUN QUADRATE



QUADRATE - ERP² Product Sheet

"I don't understand why everyone doesn't use ERP². Why waste time and money to employ expensive resources to work with your data when there's a toolset available that can do it so quickly and easily?"

"We had previously looked at using CATT to work with our data but it wasn't user friendly enough to give significant savings. It still required a large amount of time, comparable to writing an ABAP program."

"Simple data changes or uploads now take a few minutes rather than a few hours. Complex changes take a few minutes as opposed to a few days!"

"The effect this has on improved business processes and improved business decisions is immeasurable. The effect this has had on time, cost and efficiency savings within our team is worth the license cost many times over."

ERP² for SAP

ERP² enables accurate and rapid transfer of data from spreadsheets or databases into SAP in a simple three-step process.

Step 1 - Record a template

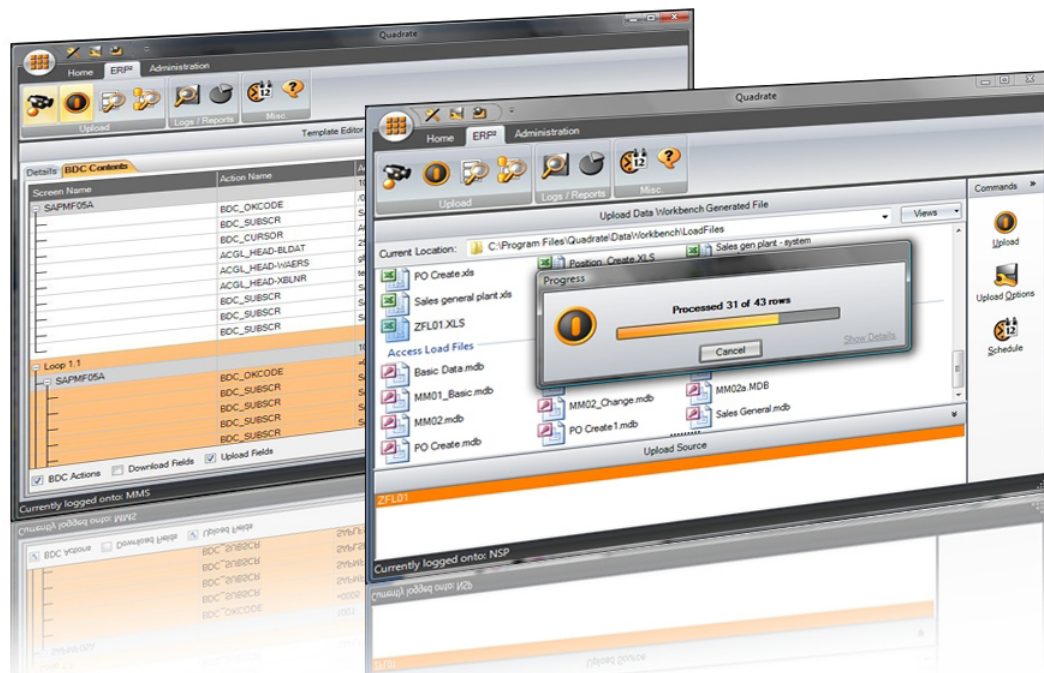
Step 2 - Add data to be uploaded

Step 3 - Upload immediately or Schedule upload

ERP² is the easiest, fastest yet most powerful product for uploading data into SAP. All SAP transactions can be used to upload data into, even custom transactions!

Business users need not have any technical skills. ERP² allow users to create complex scenarios easily.

Want to upload data based on conditions? Does your transaction have a different first screen? Do you want to do multi-line transactions with a variable number of lines per transaction? Want to download data while you are uploading and use that information in another transaction automatically? Want to string transactions, one after the other? ERP² can let you do all this with absolute ease!



Use ERP² in all your SAP modules, from FI, CO, SD, MM, PP through to HR. Use it for Master Data or Transactional Data. Use it to print your SAP Reports. Deploy it individually on a desktop or use it in an enterprise installation with a central server.



Simple 3 step process

ERP² require three simple steps:

1. Record a transaction using the standard SAP GUI.
2. Add data into template created (in Excel or Access)
3. Upload data immediately or schedule an upload at a convenient time.

Automatic Load File Generation

No need to map spreadsheets/databases to fields in SAP. ERP² does this for you automatically

Scheduled Execution

SAP data uploads can be scheduled to execute when the SAP systems are least busy.

Error Handling

Simple to understand error handling separates the records that failed, facilitating quick corrections and upload procedures.

Respects SAP Security

No need to setup additional security and ensures users can only upload data that they could have done manually.

Data Validation

Ensures that data being uploaded into SAP is in the correct format so as to prevent errors even before uploading into SAP.

Additional Application Security

Allows the restriction of certain tasks in the application even if the user has sufficient SAP authorizations.

Broad Transaction Support

Allows uploads of data into SAP in all SAP functional areas as well as custom transactions.

Multiple File Formats

Data from both Excel and Access can be uploaded into SAP without the need for any conversions.

Header / Detail Uploads

Easily upload data for invoices, purchase orders and other entities where multiple line items exist for each record.

Centralized Administration

Provides a simple mechanism to administer the permissions for each user in the system.

Flexible Licensing

Lets you choose from a licensing model that suits your individual requirements

Flexible Pricing

Gives you the full functionality of ERP² for a set number of months or records. This allows you to use the product on specific projects where mass data uploads into SAP are required.

Template Editing

Allows users to modify existing templates without needing to step through the entire transaction again.

Read Values

Provides a feature where values can be read from a transaction and written back to an Excel or Access file.

Data Manipulation

Supplies data manipulation functionality without the need for modifying your source data file.

Transaction Stringing

Strings multiple transactions together that can be executed in one step rather than many.

Key Benefits

- Reduces costly IT resource requirements.
- Empower data owners to manage their own data
- Improved data quality
- Provides mass upload and maintenance functionality without any programming.
- Uses familiar data management tools, eliminating additional training.
- Reduces time to change and upload data in SAP by eliminating manual data entry and time necessary to create custom upload programs.
- Quick creation of reliable data for testing
- Automate repetitive data entry, reducing workload



United States

5720 Gateway Boulevard
Suite 101, 102, 103
Mason, OH, 45040

Phone: +1 (888) 558-6409
Fax: +1 (513) 407-5521



United Kingdom

57 Princess Street
Manchester
M2 4EQ

Phone: +44 (208) 090-4836
Fax: +44 (161) 236-7266



Germany

Lessingstr. 11
47495
Rheinberg

Phone: +49 (2843) 9882
Fax: +49 (2843) 9883



Designed for the

INEXPERIENCED